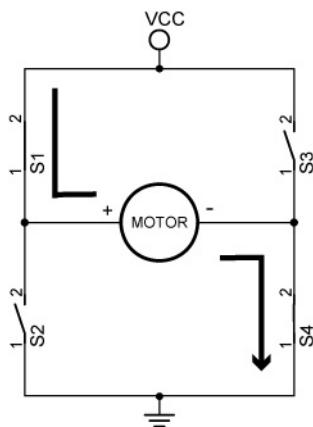


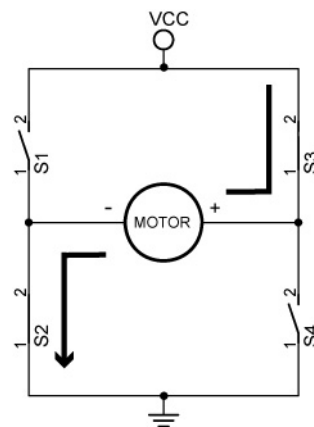
H-Bridges and Electronic Motor Control

Cornerstone Electronics Technology and Robotics II (4 Hour Class)

- **Administration:**
 - Prayer
 - Debriefing Botball competition
- **PicBasic Pro Programs Used in This Lesson:**
 - General PicBasic Pro Program Listing:
<http://www.cornerstonerobotics.org/picbasic.php>
 - Lab 6 h_bridge_sn754410_1 as .pdf file:
http://cornerstonerobotics.org/code/h_bridge_sn754410_1.pdf
- **Four States of a DC Motor with Terminals A and B:**
 - Clockwise: Terminal A to GND, Terminal B to +VDC
 - Counterclockwise: Terminal A to +VDC, Terminal B to GND
 - Coasting: Terminals A & B disconnected
 - Braking: Terminal A to Terminal B
 - When a force acts on a motor (such as coasting), the motor acts as a generator, resisting the applied force. So as the motor tries to coast to a stop, the motor acting as a generator resists the coasting rotation – thereby serving as a brake.
 - Perform Motor Control, H-Bridges LAB 1 – Four States of a Motor
- **The Need for Motor Drivers:**
 - Motor drivers provide high currents to a motor.
 - Motor drivers provide higher voltages to motors than microcontrollers can handle.
 - Motor drivers isolate logic circuits from motor spikes and electrical noise from the motor.
 - Motor drivers supply unregulated power from batteries.
- **Basic H-Bridges Motor Driver Circuit:**
 - Circuit is known as an H-bridge because it resembles the letter H.
 - H-Bridge Using SPST Switches:
 - The motor in the following circuit will operate when the diagonally opposite switches are closed.



**Motor Runs Clockwise
(Switches 1 and 4 Closed)**

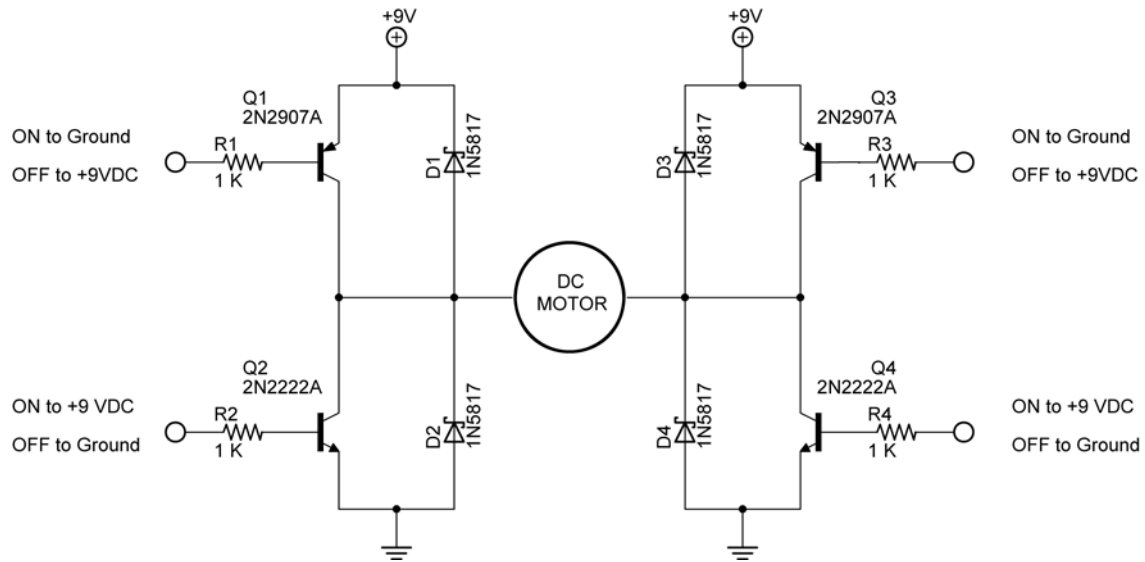


**Motor Runs Counter-Clockwise
(Switches 2 and 3 Closed)**

- What happens if S1 and S2 or S3 and S4 are closed simultaneously?
- Perform Motor Control, H-Bridges LAB 2 – H-Bridges with SPST Switches

- **H-Bridge Using Bipolar Transistors:**

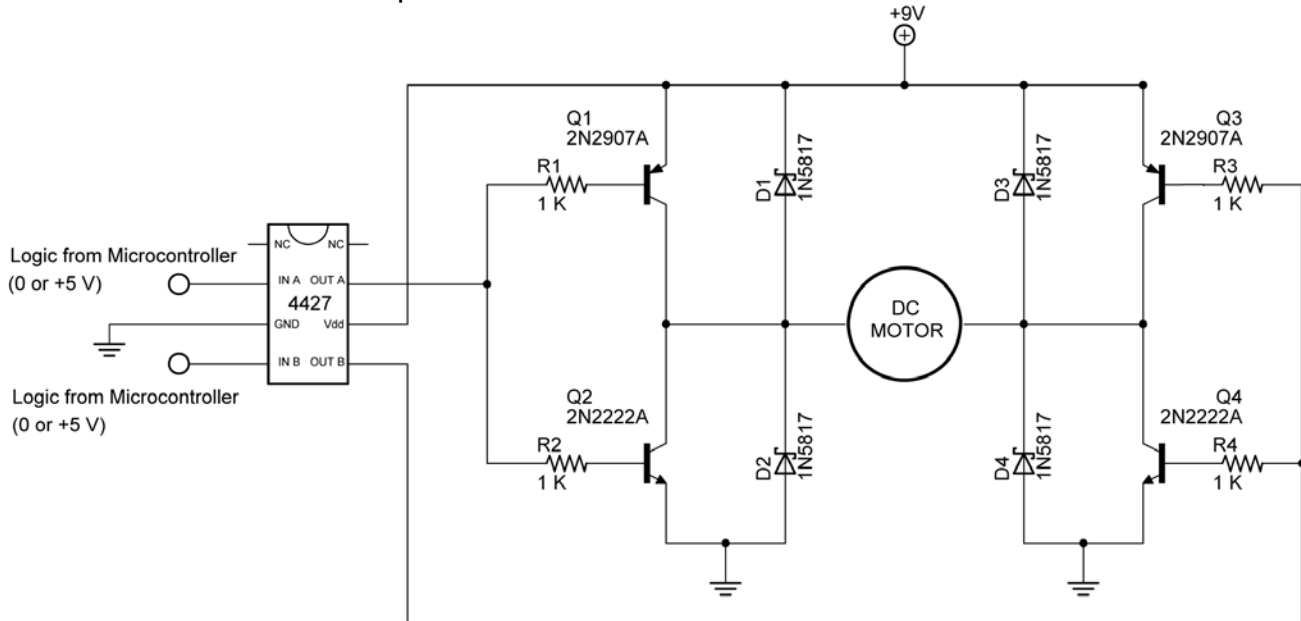
- Transistors can serve as switches in the above circuit and perform the same function.
- The transistors used have a peak collector current of 800 mA.
- The diodes, D1 – D4, are called clamp diodes and they protect the transistors from counter-electro motive force or CEMF. Remember, when current through an inductor is increased or decreased, the inductor "resists" the change in current by producing a voltage between its leads in opposing polarity to the change. Since DC motors act as inductors, they can produce voltages 20 times the original voltage. These diodes trap the voltage spikes.



Bipolar NPN and PNP H-Bridge Motor Driver Circuit

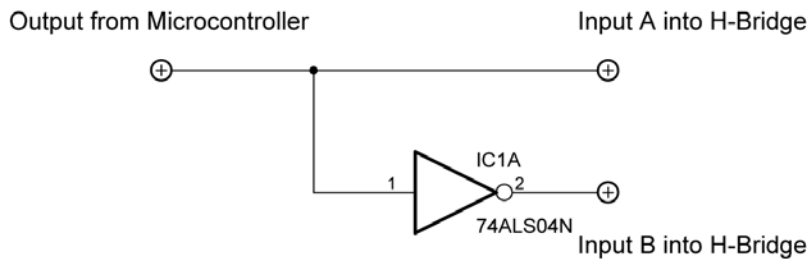
- Operations:
 - Clockwise Operation: Q3 Grounded, Q2 +9 VDC
 - Counterclockwise Operation: Q1 Grounded, Q4 +9 VDC
 - Braking: Q1 and Q3 Grounded with Q2 and Q4 Disconnected
 - Braking: Q2 and Q4 +9 VDC with Q1 and Q3 Disconnected
 - Coasting: Q1, Q2, Q3, and Q4 Disconnected
 - Perform Motor Control, H-Bridges LAB 3 – Bipolar Transistor H-Bridges Motor Driver

- Adding a 4427 Interface Chip:
 - The 4427 IC translates the input logic levels (0 and +5V) to output voltage levels within 25mV of the positive supply voltage or ground.
 - The supply voltage can range from +4.5V to +18V. In our case, the supply voltage is +9V.
 - The peak output current is 1.5A.
 - All of the transistors can not be off at the same time so coast mode is not possible with the 4427 IC.



4427 IC Connection to the H-Bridge

- Complete Motor Control, H-Bridges LAB 4 – 4427 Interface IC
- Single Output for Motor Control:
 - Since the motion outputs are always reverse of each other, an inverter connected to the second input allows a single output from the microcontroller. See schematic and truth table below.
 - When Input A is HIGH (+5 V), Input B is inverted to a LOW (0V).



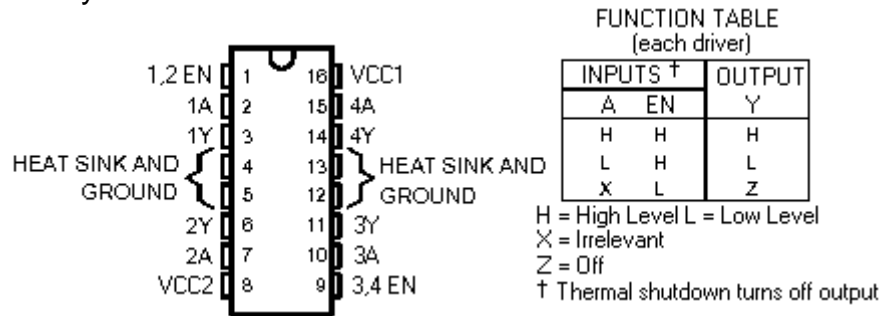
Single Output H-Bridge Driver

Output from Microcontroller	Input A	Input B
HIGH	HIGH	LOW
LOW	LOW	HIGH

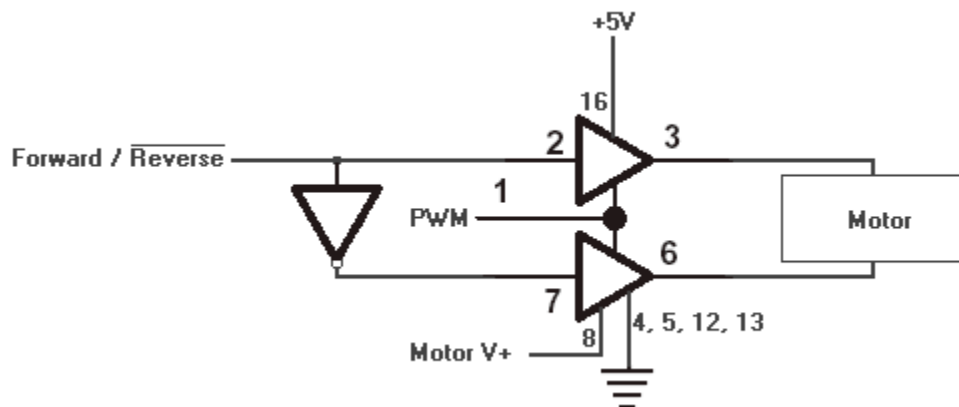
Truth Table

- **Texas Instrument SN754410 Motor Driver IC:**

- Many applications have no need to supply high current devices. There are smaller H-bridges that require little additional circuitry such as the Texas Instrument SN754410.
- Pin Layout:



There are 4 sections (1-4) inside, each with an input designated A, and an output designated Y: Each output is good for about 1 amp continuous output. The EN pins enable the outputs when HIGH. The outputs are disconnected from what they are driving when the EN lines are LOW. An inverter can be added to provide bi-directional operation:



Connections to SN754410

From <http://www.learn-c.com/experiment7.htm>

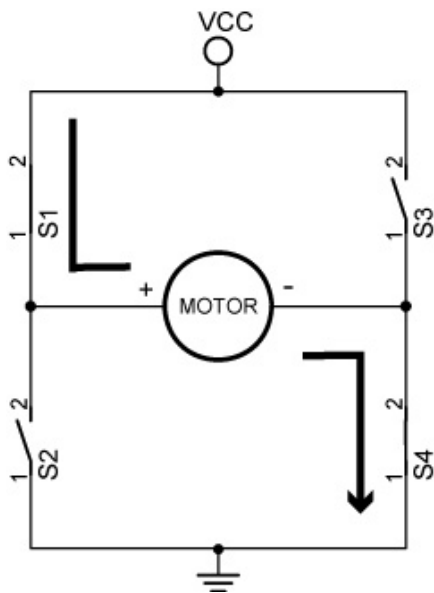
- Perform Motor Control, H-Bridges LAB 5 – SN754410 H-Bridges Motor Driver
- Perform Motor Control, H-Bridges LAB 6 – PIC16F88 Driving the SN754410 H-Bridges Motor Driver

Cornerstone Electronics Technology and Robotics II Motor Control, H-Bridges LAB 1 – Four States of a Motor

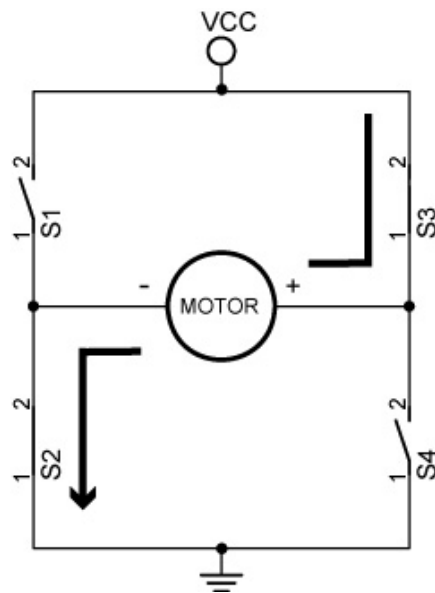
- **Purpose:** The purpose of this lab is to have the student verify the four states of a motor.
- **Apparatus and Materials:**
 - 1 – DC Motor
 - 1 – 9 Volt Battery
- **Procedure:**
 - Connect the motor in the following manner and record the response of the motor:
 - Connect motor terminal A to GND and terminal B to +9 VDC
Motor Response:_____
 - Connect motor terminal A to +9 VDC, and terminal B to GND
Motor Response:_____
 - Disconnect terminals A & B
Motor Response:_____
 - Connect terminal A to terminal B
Motor Response:_____

Cornerstone Electronics Technology and Robotics II Motor Control, H-Bridges LAB 2 – H-Bridges with SPST Switches

- **Purpose:** The purpose of this lab is to have the student manually verify the basic function of an H-bridge.
- **Apparatus and Materials:**
 - 1 – DC Motor
 - 1 – 9 Volt Battery
 - 4 – SPST Switches
- **Procedure:**
 - Wire the follow circuit.
 - Close the switches in the manner listed in the results table (**Do not close S1 and S2 or S3 and S4 simultaneously – it will create a short circuit**).
 - Document your results.



**Motor Runs Clockwise
(Switches 1 and 4 Closed)**



**Motor Runs Counter-Clockwise
(Switches 2 and 3 Closed)**

- **Results:**

Switch State				Motor Operation
S1	S2	S3	S4	
Closed	Open	Open	Closed	
Open	Closed	Closed	Open	
Closed	Open	Closed	Open	
Open	Closed	Open	Closed	

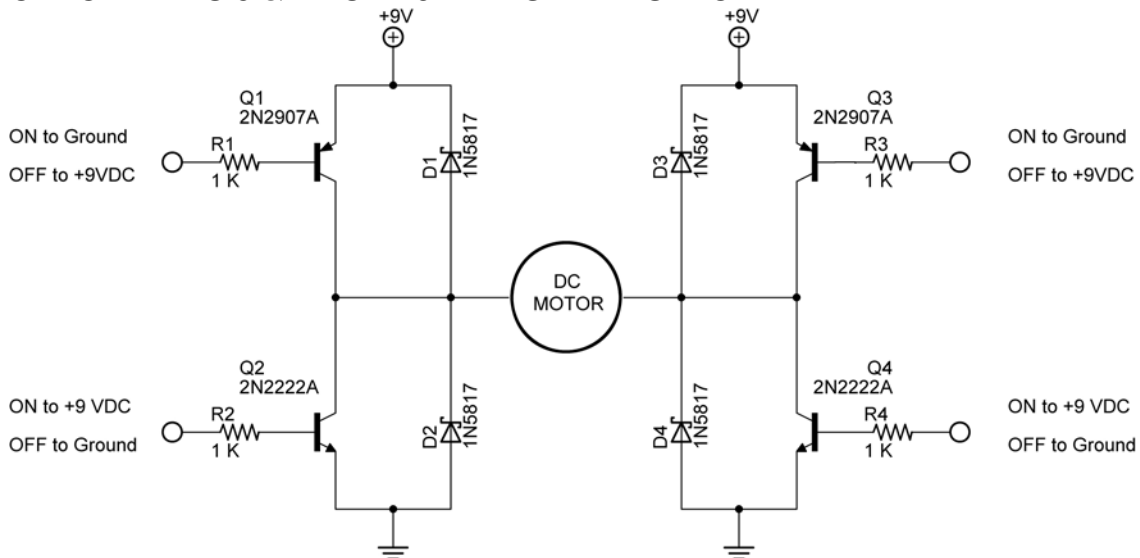
Cornerstone Electronics Technology and Robotics II

Motor Control, H-Bridges LAB 3 – Bipolar Transistor H-Bridges Motor Driver

- **Purpose:** The purpose of this lab is to have the student setup an electronic H-bridge and to operate it manually.
- **Apparatus and Materials:**
 - 1 – DC Motor
 - 1 – 9 Volt Battery
 - 2 – 2N2907A PNP Transistors
 - 2 – 2N2222A NPN Transistors
 - 4 – 1N5817 Diodes
- **Procedure:**
 - **As with switches, do not short circuit through the transistors (Q1 & Q2 or Q3 & Q4).**
 - Wire the following circuit the robotic car breadboard.
 - Connect the inputs to the transistor bases according to the following table and record the action of the motor:

Transistor Connections				Motor Operation
Q1	Q2	Q3	Q4	
+9V	+9V	GND	GND	
GND	GND	+9V	+9V	
GND	Disconnected	GND	Disconnected	
Disconnected	+9V	Disconnected	+9V	
Disconnected	Disconnected	Disconnected	Disconnected	

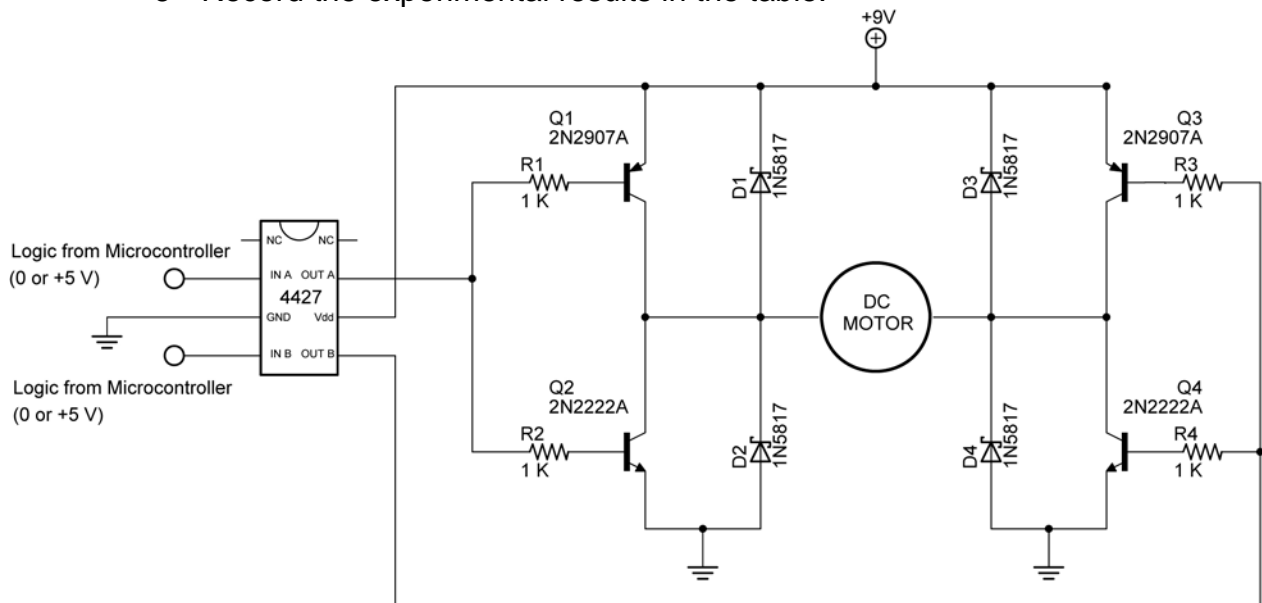
CHECK LINES 3 & 4 FOR +9 AND GND RESPECTIVELY



- Tie the inputs of Q1 and Q2 together and also connect the inputs of Q3 and Q4 together. What purpose do these connections serve?

Cornerstone Electronics Technology and Robotics II Motor Control, H-Bridges LAB 4 – 4427 Interface IC

- **Purpose:** The purpose of this lab is to have the student insert a 4427 interface IC to simplify the control of an H-bridge.
- **Apparatus and Materials:**
 - 2 – DC Motors
 - 1 – 4427 Interface IC
 - 2 – 2N2907A PNP Transistors
 - 2 – 2N2222A NPN Transistors
 - 4 – 1N5817 Diodes
- **Procedure:**
 - Refer to the 4427 Interface IC H-Bridge Output Results Table below. Given the inputs for A and B, fill in the states of Q1-Q4 (On or off), then predict the action of the motor (Clockwise, counter-clockwise, braking, or coasting).
 - Now wire the 4427 interface IC circuit below.
 - Apply a HIGH, Low, or Disconnect to the inputs A and B of the 4427 IC.
 - Record the experimental results in the table.



4427 Interface IC Circuit

• **Results:**

4427 Interface IC H-Bridge Output Results							
Input A	Input B	Q1	Q2	Q3	Q4	Predicted Results	Experimental Results
HIGH	HIGH						
HIGH	LOW						
LOW	HIGH						
LOW	LOW						

Cornerstone Electronics Technology and Robotics II
Motor Control, H-Bridges LAB 5 – SN754410 H-Bridges Motor Driver

- **Purpose:** The purpose of this lab is to acquaint the student with the operation of a single chip motor driver – SN754410 by Texas Instrument.
- **Discussion:**
 - PWM has yet to be covered so the PWM ports are either set HIGH (100% duty cycle) or LOW (0% duty cycle) See the lesson on PWM to adjust values between 100% and 0%.
- **Apparatus and Materials:**
 - 2 – Gearhead DC Motors, Jameco #155855
 - 1 – SN754410 Quadruple Half-H Driver, Pololu #0024
 - 1 – 74LS04 Hex-Inverter
 - 8 – 1N5817 Diodes
 - 4 – 10K Resistors
 - 1 – 1000 uF Capacitor
- **Procedure:**
 - Wire the circuit below and make the input connections as follows:
 - Motor + Voltage to +9V
 - PWM Motor 1 and 2 to 0V or +5V
 - Forward/Reverse Motor 1 and 2 to 0V or +5V
 - Complete the table below.

- Results:

SN754410 H-Bridge Motor Driver Results		
PWM Motor 1	F/R Motor 1	Motor Operation
HIGH	HIGH	
HIGH	LOW	
LOW	HIGH	
LOW	LOW	

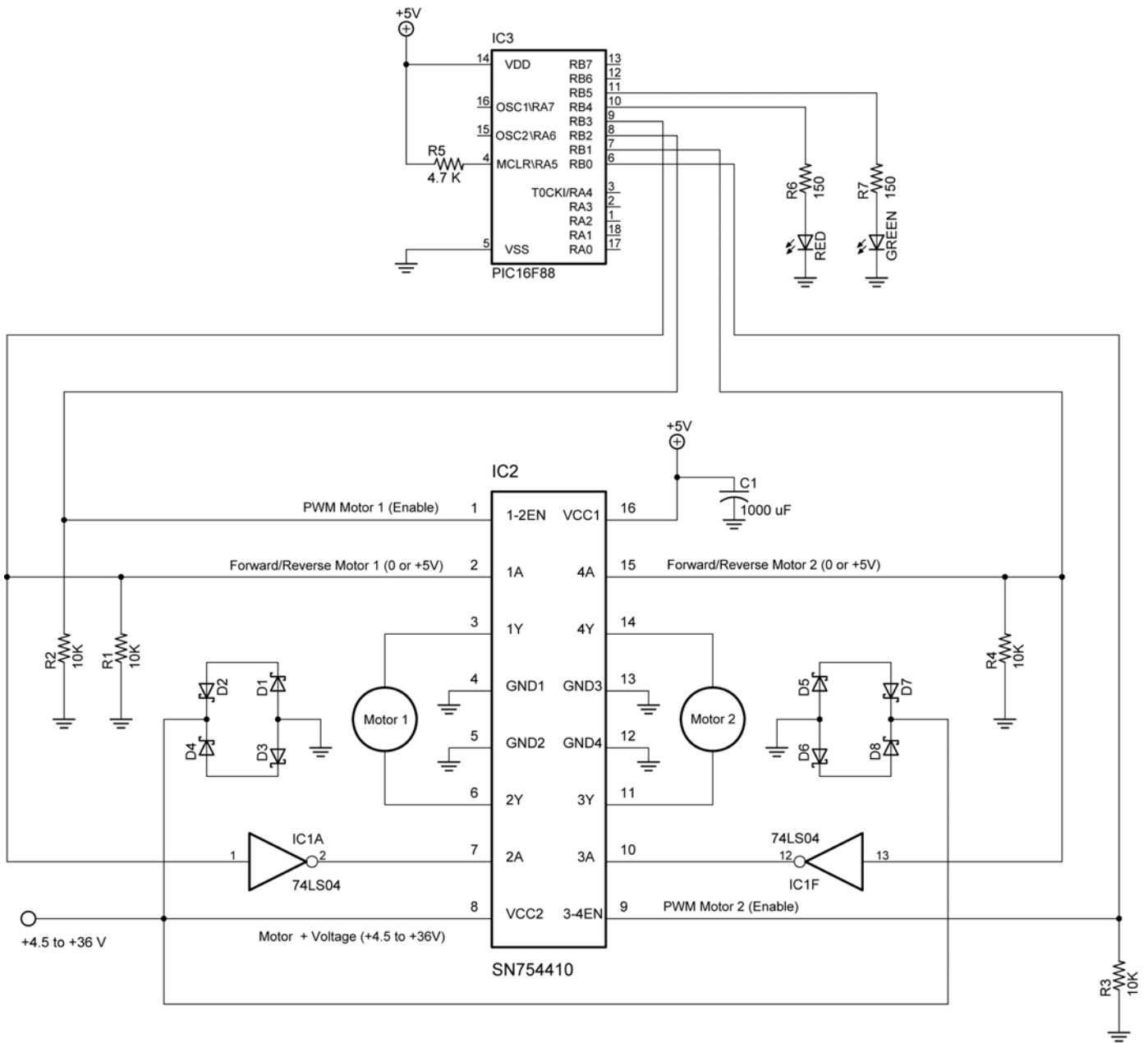
SN754410 H-Bridge Motor Driver Results		
PWM Motor 2	F/R Motor 2	Motor Operation
HIGH	HIGH	
HIGH	LOW	
LOW	HIGH	
LOW	LOW	

Cornerstone Electronics Technology and Robotics II
Motor Control, H-Bridges LAB 6 – PIC16F88 Driving the SN754410 H-Bridges
Motor Driver

- **Purpose:** The purpose of this lab is to acquaint the student with using a PIC microcontroller to drive a single chip motor driver – SN754410 by Texas Instrument.

- **Apparatus and Materials:**
 - 1 – Robotic Car Platform
 - 2 – Gearhead DC Motors, Jameco #155855
 - 1 – SN754410 Quadruple Half-H Driver, Pololu #0024
 - 1 – 74LS04 Hex-Inverter
 - 1 – PIC16F88
 - 8 – 1N5817 Diodes
 - 1 – 4.7K Resistor
 - 4 – 10K Resistors
 - 2 – 150 Ohm Resistors
 - 2 – LEDs
 - 1 – 1000 uF Capacitor

- **Procedure:**
 - Wire the following circuit on the robotic car breadboard. See the photo in Lab 5 for one possible layout.
 - Make sure that the motor is from a power supply separate from the PIC16F88.
 - Program the PIC16F88 with **h_bridge_sn754410_1.pbp**.



NOTES:

1. D1 - D8 1N5817
2. 74LS04 Pin 7 GND
74LS04 Pin 14 Vcc +5V
3. SN754410 GNDS Also Act As
Heatsinks, Ground Separately

Texas Instrument SN754410 H-Bridge Motor Driver

• **Challenge:**

- The robotic car must navigate the given course.
- Dead reckoning may be used to navigate the course.
- An LCD must display which direction the car is traveling, such as, forward, right, left, or backup.
- Create and call up subroutines for each direction of movement including backup. Do not use the word "reverse" since it is a reserved word in PicBasic Pro.
- Save the new program as **sn754410_navigate.pbp**.

Switch State				
S1	S2	S3	S4	Motor Operation
Closed	Open	Open	Closed	Clockwise
Open	Closed	Closed	Open	Counterclockwise
Closed	Open	Closed	Open	Braking
Open	Closed	Open	Closed	Braking

Motor Control, H-Bridges LAB 2 – H-Bridges with SPST Switches

4427 Interface IC H-Bridge Output Results							
Input A	Input B	Q1	Q2	Q3	Q4	Predicted Results	Experimental Results
HIGH	HIGH	Off	On	Off	On	Braking	Braking
HIGH	LOW	Off	On	On	Off	Clockwise	Clockwise
LOW	HIGH	On	Off	Off	On	Counterclockwise	Counterclockwise
LOW	LOW	On	Off	On	Off	Braking	Braking

Results to Motor Control, H-Bridges LAB 4 – 4427 Interface Chip