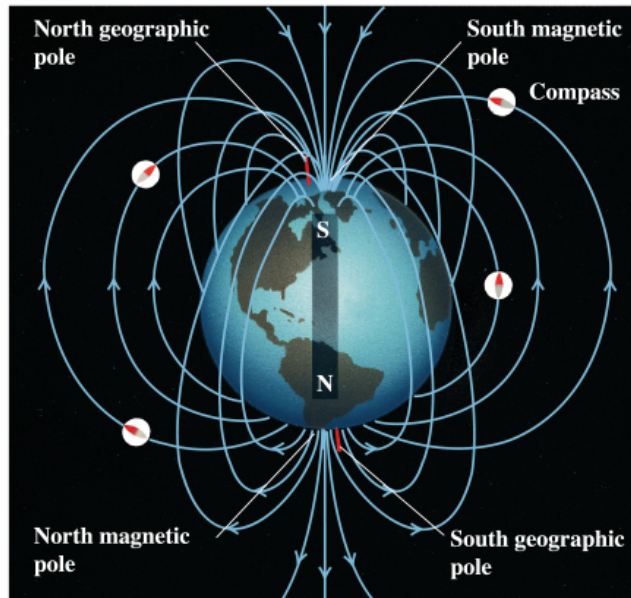


Cornerstone Electronics Technology and Robotics I Week 17 Magnetism Tutorial

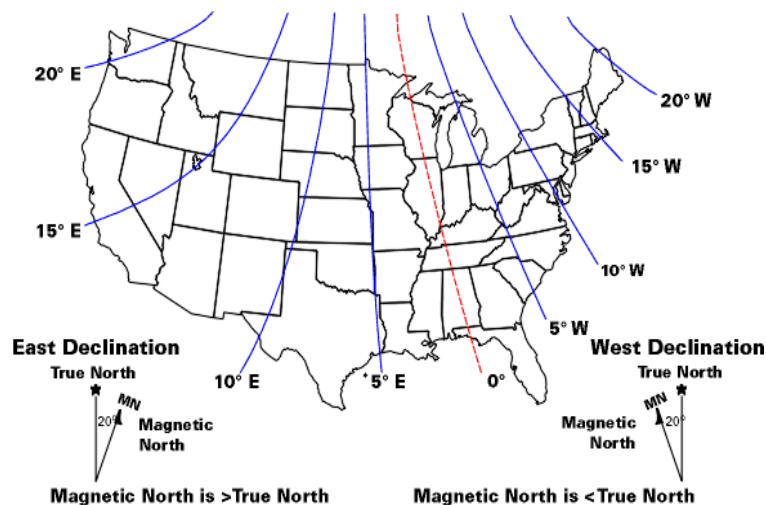
- Administration:
 - Prayer
 - Voltage Divider Review:
 - Divide +9 V source in half using 1K resistors. Solve for current.
- Electricity and Electronics, **Section 9.1**, Basic Magnetic Principles:
 - Magnetism: A magnet is defined as a material or substance that has the power to attract iron, steel and other magnetic materials.
 - Earth acts as a giant magnet.



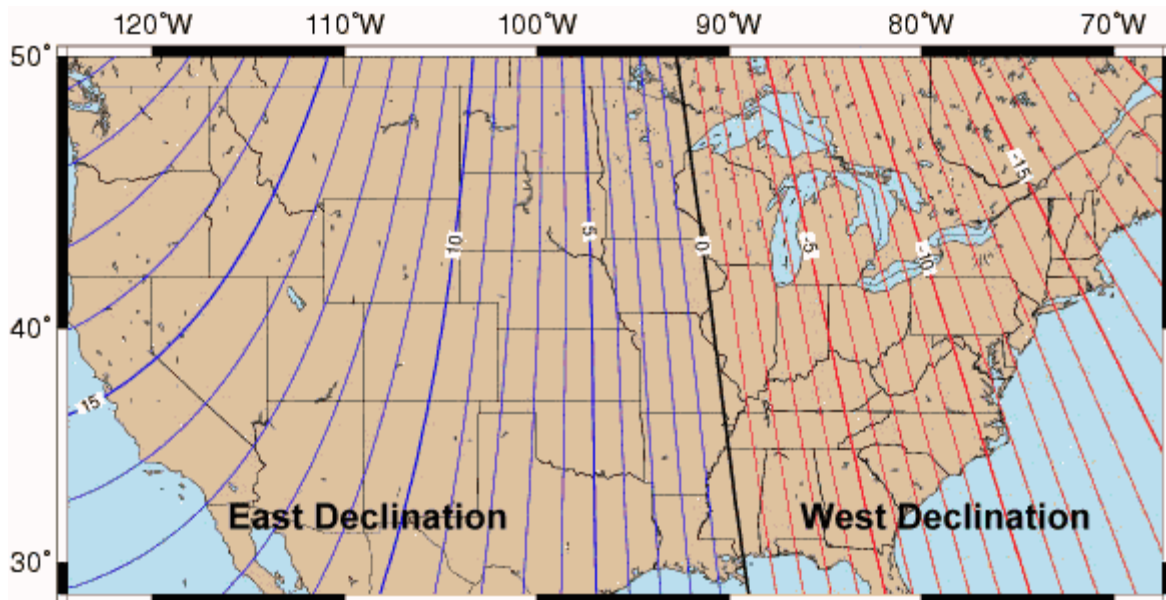
Copyright © Addison Wesley Longman, Inc.

From: http://www.physics.sjsu.edu/becker/physics51/images/28_03_Earth_magnetic_field.jpg

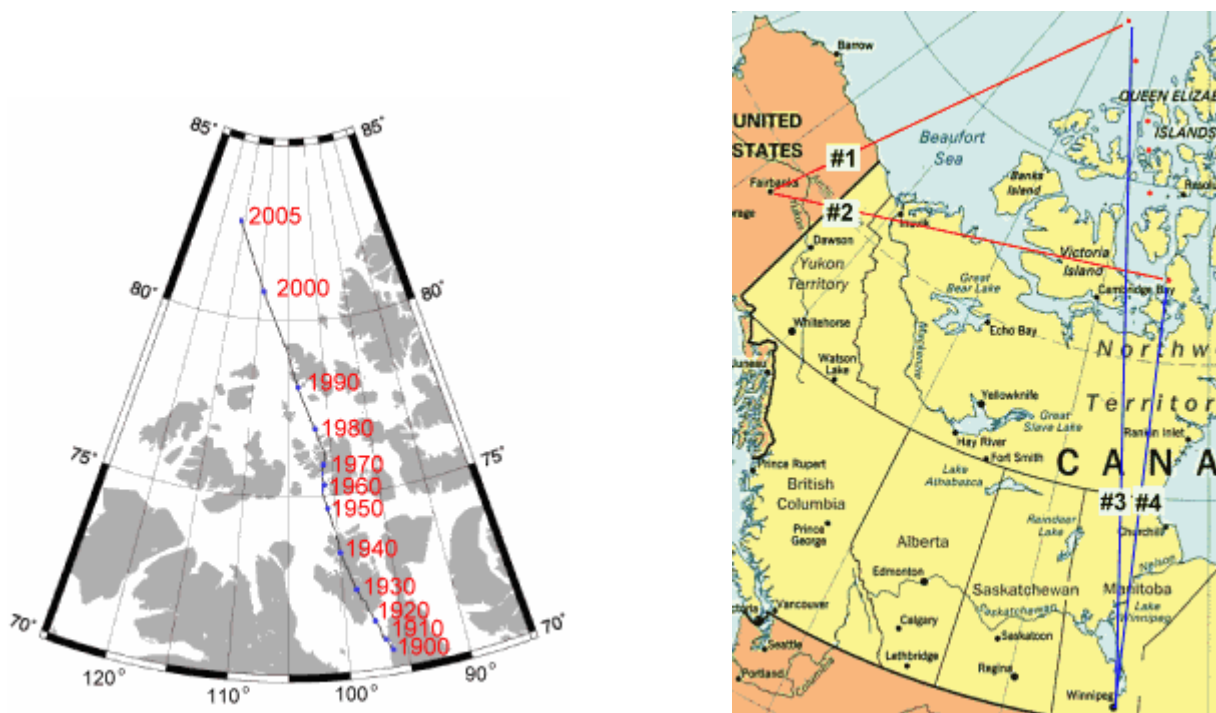
- Magnetic Declination: The magnetic declination at any point on the earth is the angle between the local magnetic field -- the direction the north end of a compass points -- and true north.



From: http://www.ussartf.org/compass_basics.htm



Magnetic Declination across the Continental US

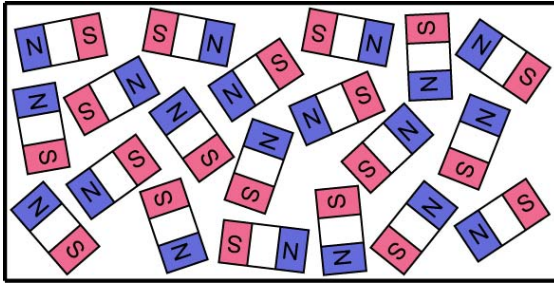


North Magnetic Pole Drift 1900–2005 Changes in Magnetic Declination 1900–2005

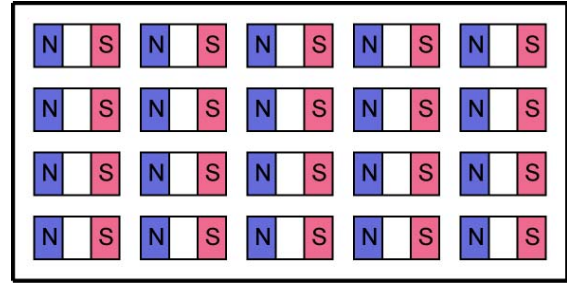
From: <http://www.compassdude.com/compass-declination.shtml>

- The magnetic north pole is now moving about 25 miles per year on its way out of Canada and heading to Russia.
- Perform Magnetism Lab 1 – Floating Compass Pin
- Related sites:
 - <http://geomag.usgs.gov/movies/movies/index.php?type=declination&format=flash>
 - <http://geomag.usgs.gov/movies/movies/index.php?type=tintensity&format=flash>

- Digital Compass Car: <http://www.youtube.com/watch?v=Klw6IMg0o3s>
- First Two Laws of Magnetism:
 - Law 1: Like poles repel each other.
 - Law 2: Unlike poles attract each other.
 - Demonstration with permanent magnets.
- Causes of Magnetism in Materials:
 - Alignment of the magnetic poles of the molecules in ferromagnetic materials creates a magnetic. Ferromagnetic materials include iron, nickel, and cobalt.
 - Permanent magnet is created by placing ferromagnetic material in a very strong magnetic field. See the illustration below.

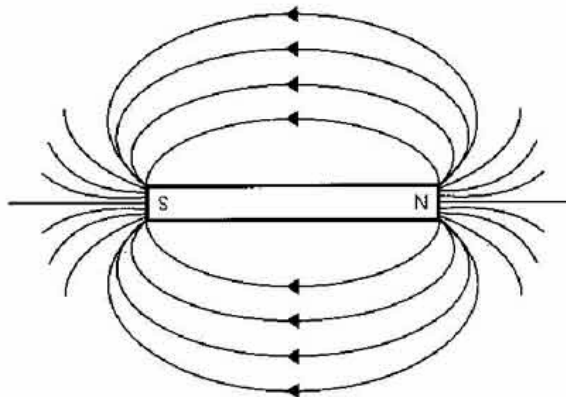


Unmagnetized Molecules



Magnetized Molecules

- Every magnetic has a north pole and a south pole.
- Break long magnet into parts. See applet: <http://www.ndt-ed.org/EducationResources/HighSchool/Magnetism/magneticproperties.htm>
- Heat will destroy a magnet. Heat energy causes an increase in molecular activity which permits the molecules to return to their random positions.
- Magnetic Flux:
 - A magnet has a magnetic field surrounding it that is made up with lines of force or magnetic flux lines.



- The concentration of the lines of force shows the strength of the magnetic field at that place. The strength of a magnetic field is determined by the field's flux density or the number of lines per in² or lines per cm². The higher the number of lines per in² the higher the magnetic flux.

- Demonstrate magnetic lines of force. Lines of filings reflect lines of magnetic force. Experiment 9-1 from *Electricity and Electronics*.
- See applet: <http://www.ndt-ed.org/EducationResources/HighSchool/Magnetism/magneticfields.htm>
- See applet: <http://falstad.com/vector3dm/>
 - Change current line to magnetic sphere
 - Display: Field Lines
- Formula for magnetic flux density:

$$B = \phi / A$$

Where:

B = magnetic flux density (in tesla, T)

ϕ (the Greek letter phi) = number of lines (flux) (in weber, Wb)

A = cross-sectional area (in square meters, m²)

- Strength of Magnetic fields:
 - The strength of the field at the Earth's surface ranges from less than 30 [microteslas](#) (0.00003 T) in an area including most of South America and South Africa to over 60 microteslas around the magnetic poles in northern Canada and south of Australia, and in part of Siberia. Internet site: <http://geomag.usgs.gov/charts/>
 - The strongest continuous magnetic field,(45 T), yet produced in a laboratory is at Florida State University's National High Magnetic Field Laboratory. See: <http://www.magnet.fsu.edu/mediacenter/features/meetthemagnets/hybrid.html>
 - In medical [magnetic resonance imaging](#), flux densities reach up to 7 T
- Perform Magnetism Lab 2 – Reed Switch and Reed Relay

- **Permeability:**
 - Definition: Permeability is the ability of a material to conduct magnetic lines of force. Permeability is to magnetic circuits as conductance is to electrical circuits.
 - The permeability of air is defined as 1. The higher the value of permeability for a material, the better that material will conduct lines of force (magnetic flux). Other maximum permeability values:
 - Iron 5,000
 - Nickel 60
 - Supermalloy 1,000,000

Reference: <http://www.ee.surrey.ac.uk/Workshop/advice/coils/mu/#mur>

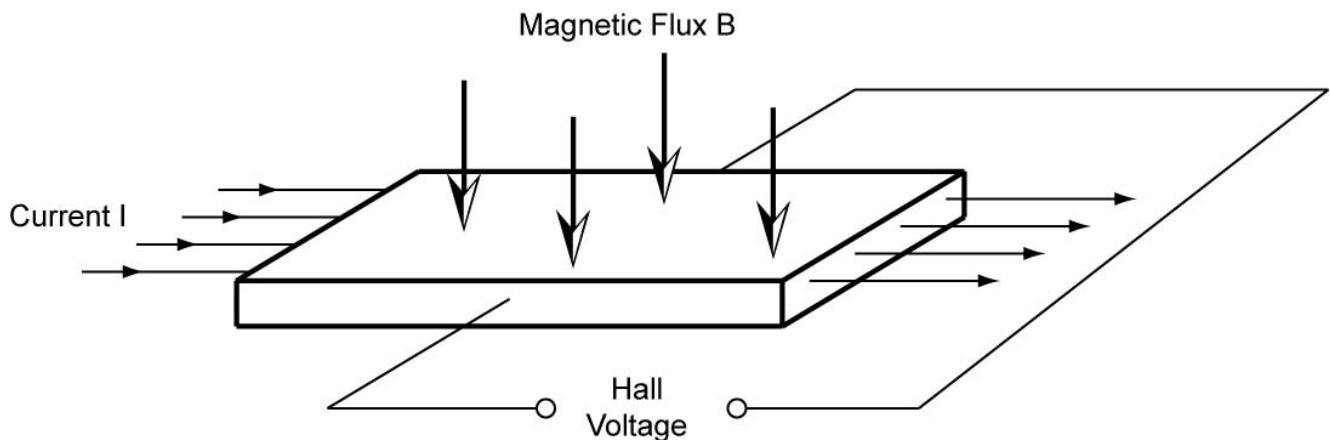
- **Reluctance:**
 - Definition: Reluctance is the resistance to magnetic flux or the magnetic lines of force.
 - Remember that there are four factors affecting conductor resistance. Some of these same four factors also affect the conductor reluctance. The factors that affect conductor reluctance are:
 - Cross section area of a conductor; the larger the cross-section area, the lower the reluctance (inversely related).
 - Type of material; reluctance varies for different conductor materials.
 - Length of the conductor; the longer the conductor, the higher the reluctance (directly related).
- **Retentivity:** The ability of a material to retain its magnetism after the magnetizing field has been removed.
- Types of Magnets:
 - Permanent: A piece of magnetic material that retains its magnetism.
 - Electromagnet: Covered in the next section.
- Electricity and Electronics, **Section 9.2**, Electric Current and Magnetism:
 - The Danish physicist Hans Christian Oersted was lecturing one day in 1820 on the possibility of electricity and magnetism being related to one another, and in the process demonstrated it conclusively by experiment in front of his whole class.
 - **Electromagnetism:** When current flows in a conductor, a magnetic field is produced around the conductor. This magnetic field is called electromagnetism.
 - **Electromagnet:** An electromagnet is a coil wound around typically an iron or steel core. When current flows through it, the core becomes magnetized.
 - Demonstration running current through a conductor in one direction then in the opposite direction using small compasses.
 - Left Hand Rule:
 - Left hand rule based upon electron flow defining the current direction.
 - Conductors carrying alternating current are grouped in pairs to eliminate the effects of the magnetic field around a single conductor. Alternating current will be covered in Week 19.

- **Solenoid:**

- A solenoid is a conductor wound into a coil. When a current is run through a solenoid, the magnetic lines of force of each wire join with the lines of force of the other wires to form a composite magnetic field.
- Left hand rule for a coil
- Strength of a magnetic field: The strength of a magnetic field depends upon:
 - The number of turns in a coil, directly related
 - The size of the current, directly related
 - Type of core material
 - Length of the coil, inversely related
- Experiments 9-2 and 9-3 from *Electricity and Electronics*.

- **Hall-Effect:**

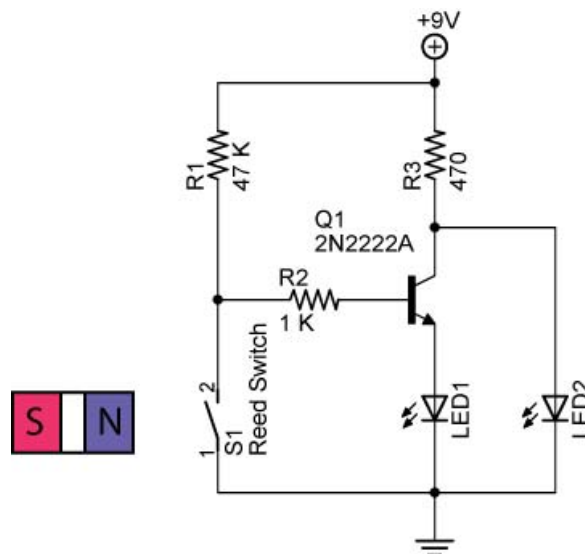
- Named after E.H. Hall of Johns Hopkins University who discovered the effect on 1879.
- When current is passed across a conductor or a semiconductor and a magnetic field is applied to the material, a Hall voltage is generated.
- The Hall voltage is much higher in semiconductors than in conductors.
- The Hall voltage is so small that the sensors are normally manufactured with a built-in amplifier circuit.



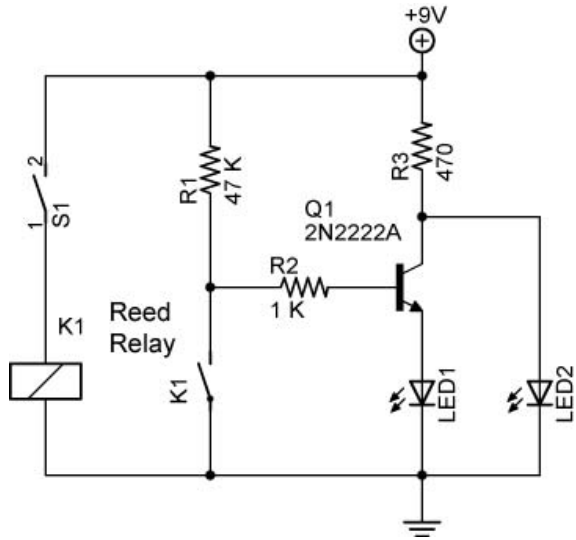
- Perform Magnetism Lab 3 – Digital Hall-Effect Sensor
- Perform Magnetism Lab 4 – Linear Hall-Effect Sensor
- For additional information on Hall-Effect sensors see <http://www.allegromicro.com/hall/>
- Review lesson and overview of each activity.

Electronics Technology and Robotics I Week 17 Magnetism LAB 2 – Reed Switch and Reed Relay

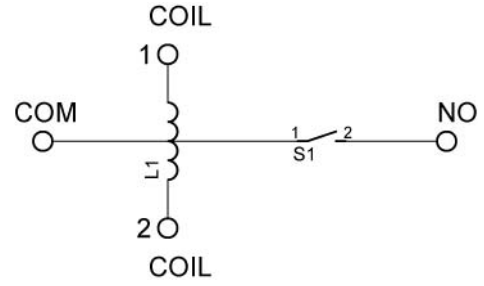
- **Purpose:** The purpose of this lab is to acquaint the student with a magnetic sensor switch and a reed relay.
- **Apparatus and Materials:**
 - 1 – Breadboard with a +9 V Power Supply
 - 1 – Bar Magnet
 - 1 – Reed Switch
 - 1 – Reed Relay (Radio Shack #275-233) See: <http://www.radioshack.com/product/index.jsp?productId=2062479&cp=>
 - 1 – 47 Resistor
 - 1 – 470 Resistor
 - 1 – 1 K Resistor
 - 1 – 2N222A NPN Transistor
 - 2 - LEDs
- **Procedure:**
 - Magnetic switches: A reed switch is a magnetic switch that will open or close depending upon the strength of the magnetic field acting upon it.
 - Wire the following circuit then use a magnet to activate the switch:
 - Replace the switch with a reed relay as shown in the reed relay circuit. The reed relay wiring diagram shows the connections.
 - Use the switch S1 to activate the reed relay.



Reed Switch Circuit



Reed Relay Circuit

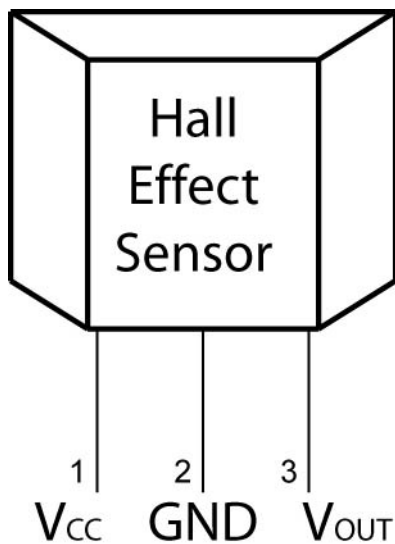


Reed Relay (K1) Wiring Diagram

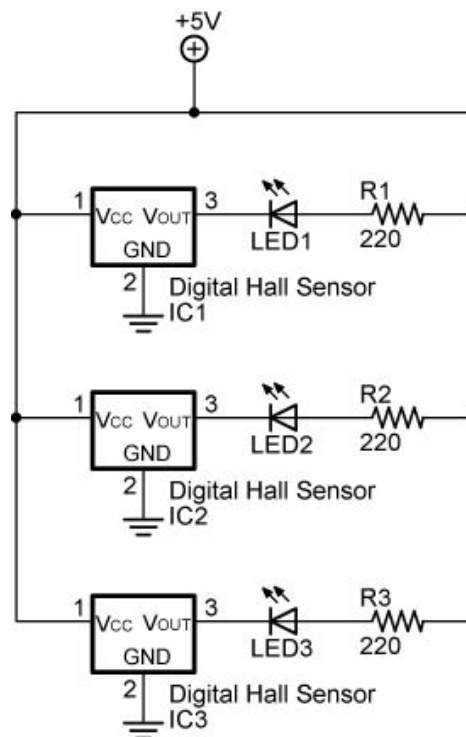
- **Conclusions:**
 - How is the magnetic force generated to close the switch in the reed relay K1?

Electronics Technology and Robotics I Week 17 Magnetism LAB 3 – Digital Hall-Effect Sensor

- **Purpose:** The purpose of this lab is to acquaint the student with a digital Hall-Effect sensor.
- **Apparatus and Materials:**
 - 1 – Breadboard with a +5 V Power Supply
 - 3 – Hall-Effect Digital Sensors (#402 LESSEMF.com, <http://www.lessemf.com/dcgauss.html>)
 - 3 – 220 Ω Resistors
 - 3 - LEDs
- **Procedure:**
 - Wire the Hall-Effect bargraph circuit below. Use a magnet to approach the Hall-Effect switch sensors from one side then the other side.
 - Leave enough room between the sensors and the LEDs to insert the magnet. See photos of spacing below.

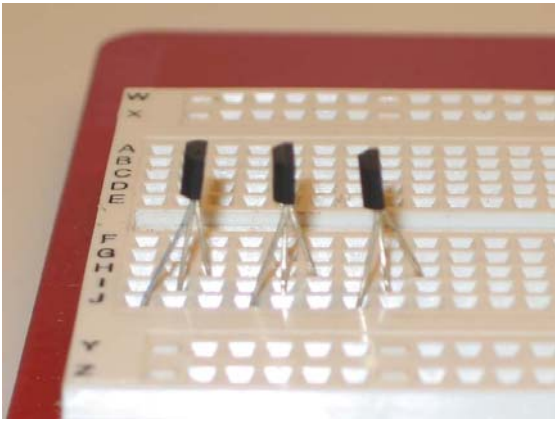


Sensor Pin Layout

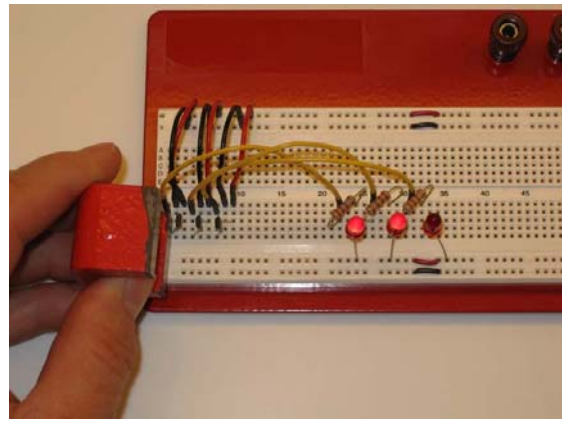


Hall Effect Bargraph Circuit

From *Electronic Sensor Circuits & Projects*
By Forrest M. Mims



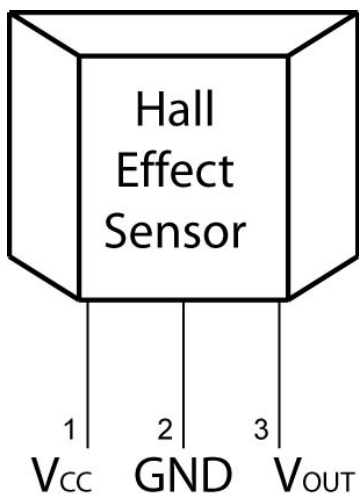
Sensor Pin Insertion into Breadboard



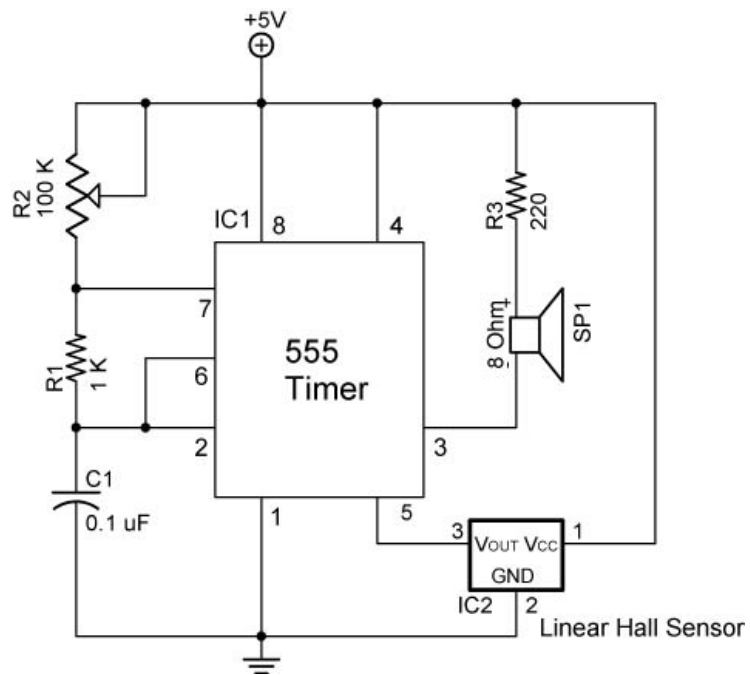
Final Hall Effect Circuit

Electronics Technology and Robotics I Week 17 Magnetism LAB 4 – Linear Hall-Effect Sensor

- **Purpose:** The purpose of this lab is to acquaint the student with a linear Hall-Effect sensor.
- **Apparatus and Materials:**
 - 1 – Breadboard with a +5 V Power Supply
 - 1 – Linear Hall-Effect Sensor (#400 LESSEMF.com, <http://www.lessemf.com/dcgauss.html>)
 - 1 – 555 Timer IC
 - 1 – 1K Ω Resistor
 - 1 – 100K Ω Potentiometer
 - 1 – 220 Ω Resistor
 - 1 – 1K Ω Resistor
 - 1 – 8 Ω Speaker
- **Procedure:**
 - Wire the Hall Effect tone generator below. Use a magnet to change the output of the linear Hall Effect sensor.



Sensor Pin Layout



Magnetic Tone Generator

From *Electronic Sensor Circuits & Projects*
By Forrest M. Mims